

You can help!

“if it is on the ground...

The quality of our water depends on us. Be aware of what is on the ground around you. It is important to protect our water sources from being contaminated by pet waste and other pollutants. Do your part in keeping our water safe.

Misconception!

People believe that storm water is treated before it is discharged into our natural water ways such as creeks, ponds, and rivers.

WRONG!

Fact: Storm water drains directly into the waterways without any treatment at all. The only water that is treated is sanitary wastewater or sewer water.

Pet Waste Do's and Don'ts:

How to minimize risk of infections.

- **DO:** Flush pet waste. Toilet water enters the sanitary sewer system and flows into the sewage treatment plant. Most pollutants are removed before the plant distributes the water back into the local streams or rivers.
- **DON'T:** Flush debris or cat litter. Cat feces may be flushed, but used litter should not as it could cause plumbing problems for you.
- **DO:** Put used litter and pet waste in a securely closed bag and deposit it in the trash for proper disposal.
- **DON'T:** Put pet waste in a compost pile, bury, put on a garden, or leave on your lawn. Pet waste has a strong odor and may bother neighbors. More importantly, it may carry diseases and could be harmful to your health and the health of others.

So guess what?

Anything that is on the ground **will** affect the quality of our water. This is an ongoing problem that has been ignored for too long. Water is a natural resource that we must protect in every way possible.

it is in the water we drink”

Contact us for more information
OPCD 812-283-3960
oakparkcd.us



Resources: Related Links

www.oakparkcd.us

www.epa.gov/npdes/stormwater

www.recycleclarkcounty.org

www.clarkswcd.org

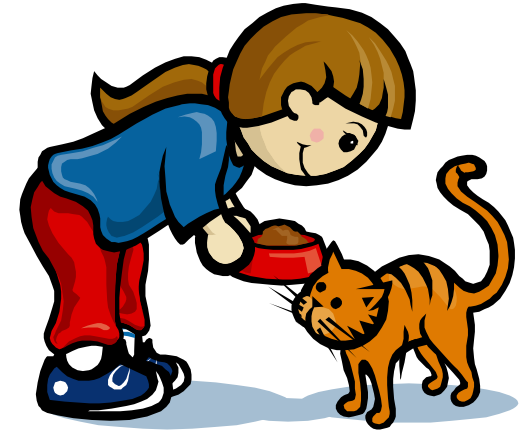
One person acting alone
can make a difference,
but that one person
taking the initiative to
get others involved
can make a world of
difference.

This information is being
provided to you by:



Oak Park
Conservancy District
Storm Water Department
Outreach Program
4230 Portage Place
Jeffersonville, IN 47130
812-283-3960

Storm Water Run-Off: Pet Waste



Got Germs?